

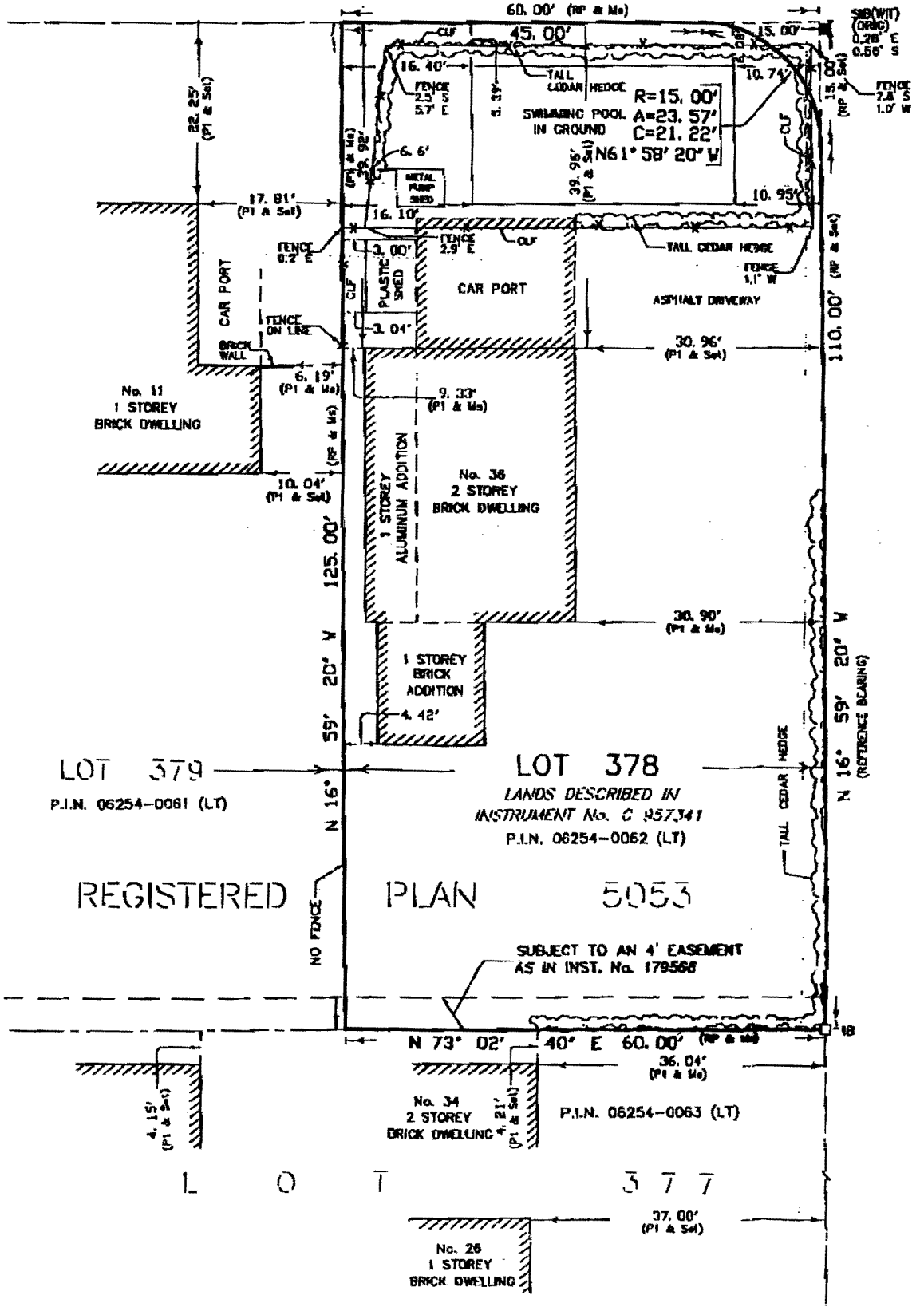
METRIC
 SHOWN ON THIS PLAN
 FEET AND CAN BE
 CONVERTED TO METRES
 BY MULTIPLYING BY 0.3048

LISA ROAD

(DEDICATED BY REGISTERED PLAN 5053)

P.I.N. 06254-0141 (LT)

(REFERENCE BEARING)
 N 73° 02' 40" E



ORTON PARK ROAD
 (ALLOWANCE FOR ROAD BETWEEN LOTS 14 AND 15, CONCESSION 1)

LOT 379
 P.I.N. 06254-0081 (LT)

LOT 378
 LANDS DESCRIBED IN
 INSTRUMENT No. C 957,341
 P.I.N. 06254-0062 (LT)

SUBJECT TO AN 4' EASEMENT
 AS IN INST. No. 179566

No. 34
 2 STOREY
 BRICK DWELLING
 P.I.N. 06254-0063 (LT)

No. 26
 1 STOREY
 BRICK DWELLING

No. 11
 1 STOREY
 BRICK DWELLING